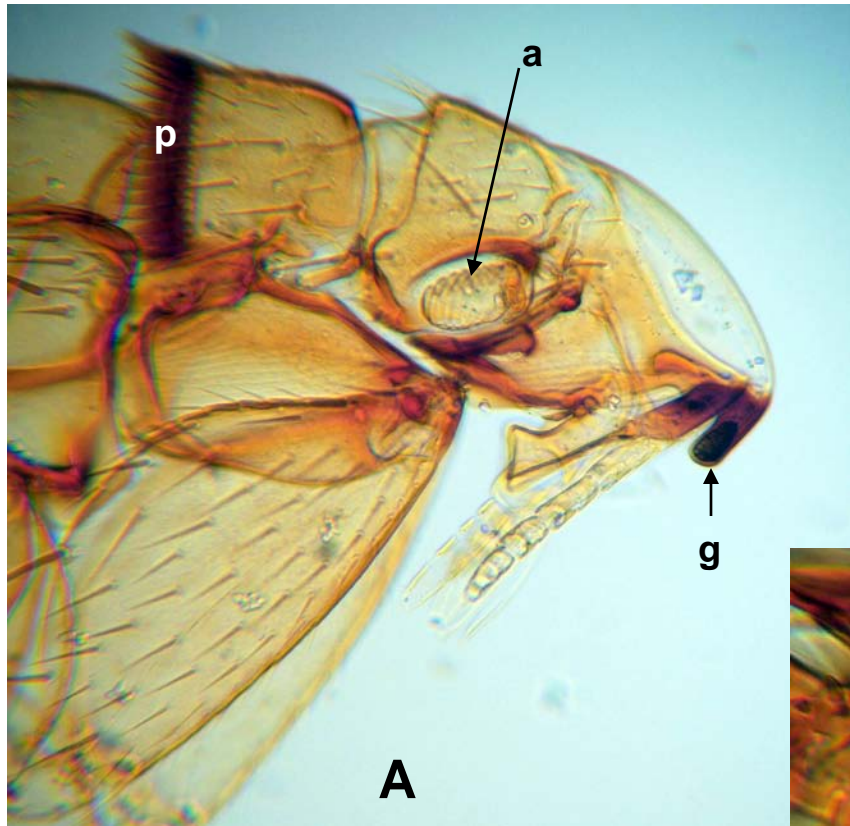
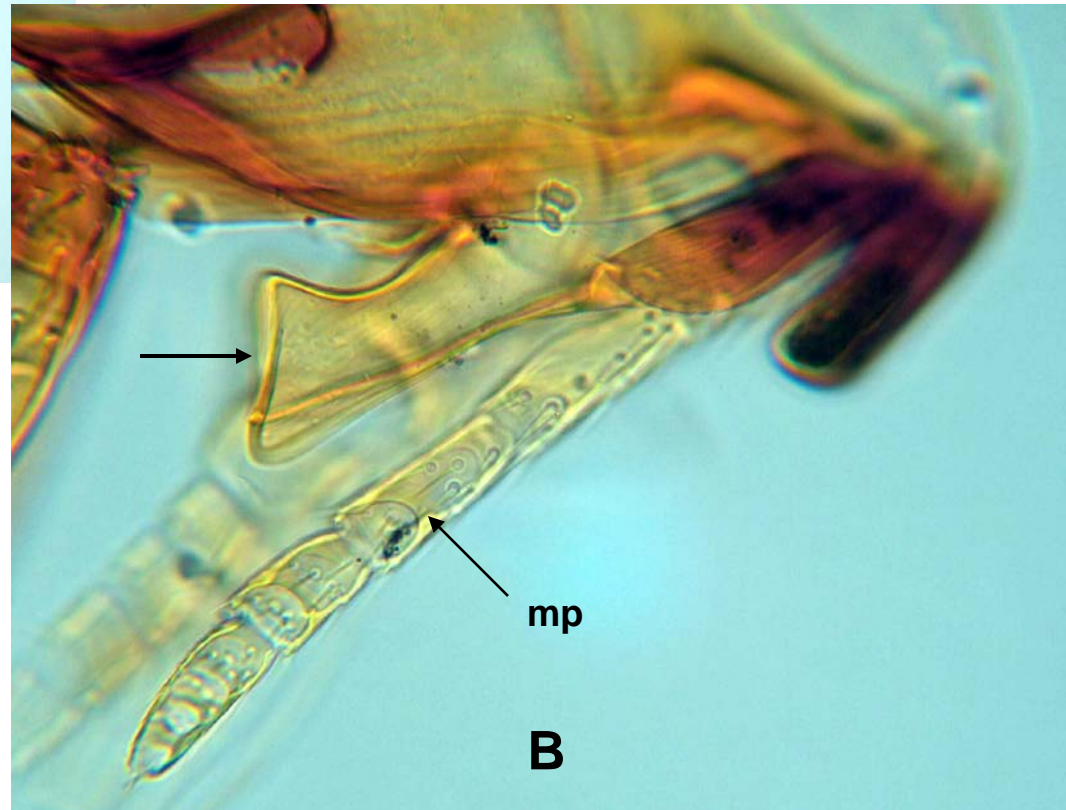


*Myodopsylla* sp., entire, male. Note the presence of genal and pronotal ctenidia (= combs) and “false combs” on dorsal abdominal segments.

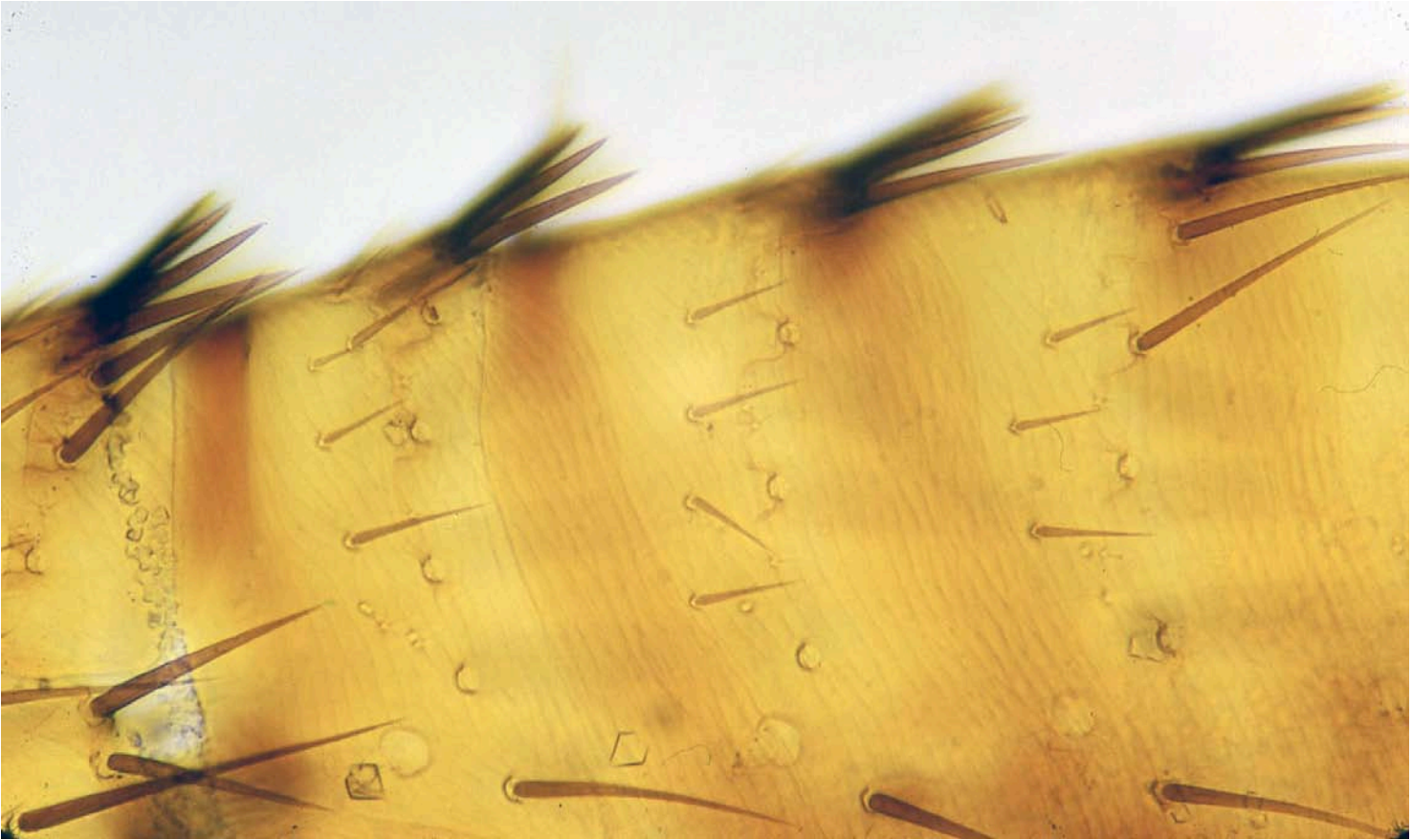




*Myodopsylla* sp.: anterior with genal and pronotal combs (A); truncated maxilla, arrow (B). Legend: a, antenna; g, genal ctenidium (with 2 teeth); mp, maxillary palp, p, pronotal ctenidium.



*Myodopsylla* sp., abdominal (“false”) combs.



*Myodopsylla* sp., female spermatheca (a, artifact).

